

ITR-01 Channel Expansion Module Installer Guide

General Safety Precautions

- Disconnect all electronics from the Juno Tower during installation of this module
- Do not install or use the module near water or heat sources
- Use only accessories specified by FrontRow
- Refer installation and service to qualified personnel
- Observe all applicable building, electrical, and fire codes when installing any electrical equipment

ESD Warning



The Juno Tower and/or expansion modules can be damaged by electrostatic discharge (ESD). When handling, care must be taken so that the devices are not damaged. Damage due to inappropriate handling is not covered by the warranty.

The following precautions must be taken when installing the expansion modules:

- Use a conductive wrist strap attached to a good earth ground.
- Always disconnect the power to the Juno from the power outlet.
- Always discharge yourself by touching the grounded bare metal surface or approved anti-static mat before picking up an ESD-sensitive electronic component.
- Use an anti-static mat to cover your work surface.

You will need the following items to install this module:

- #1 Phillips screwdriver
- A FrontRow Microphone and FrontRow Desktop software for programming microphones

Installation

1. Unplug the Juno Tower from the power outlet
2. Lay the Juno Tower down on a flat surface with the back of the Tower facing up. Remove the 8 screws that attach the back panel to the case back and remove the back panel (See Image 1 & 2)
3. Locate the area on the upper PCB where the module will be installed (See Image 3)

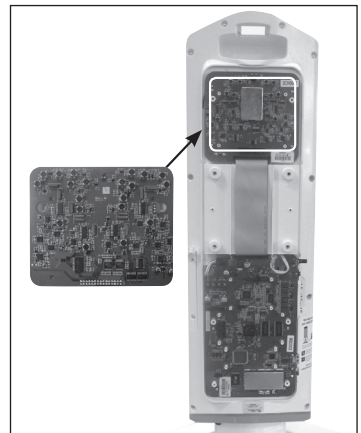
Image 1



Image 2



Image 3



Installation - continued

4. Remove the module from the packaging. (See Image 4)
 5. Connect the 2 pins on the Channel expansion module to the 2-pin connector and then angle the module down to connect to the 30-pin connector. Make sure the module board is seated all the way down and make sure no pins are exposed. (See Image 5)
 6. Attach the module to the Tower PCB using the four included screws. (See Image 6)
 7. Replace the back panel and screws.
 8. Turn on the Juno Tower and verify that the module has been detected by navigating to the Microphone Volume menu on the LCD. Confirm that channels C-E are available.
 9. Test with microphones using channels C through E.
- See **Programming Microphones** in the *Juno User Guide*.

Image 4

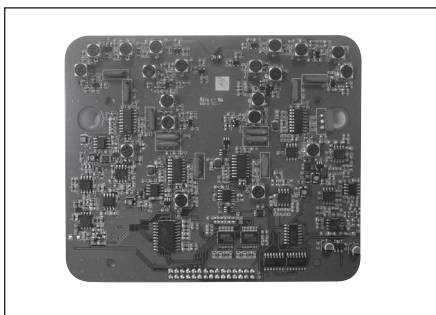


Image 5

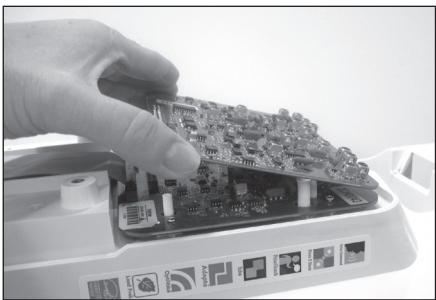


Image 6

