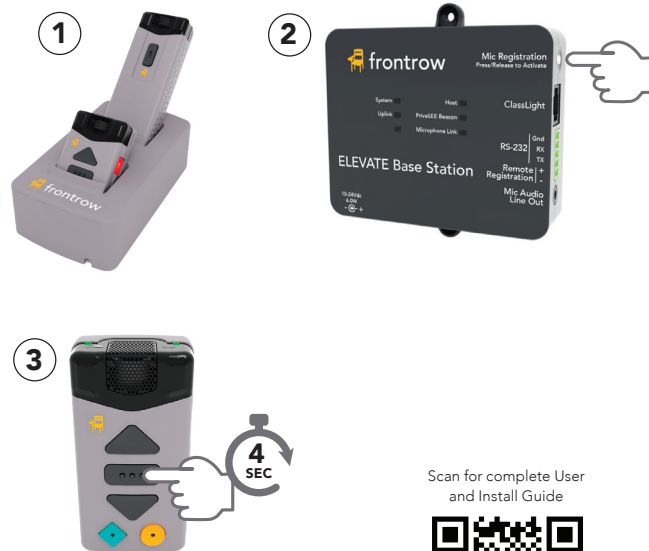


READ ME FIRST!

You **must** register (pair) microphones before first use.

- 1. Charge Microphones** - Place mics in the charger until Battery LED is slowly pulsing green.
- 2. Activate Base Station** - Press the Mic Registration button on the ELEVATE Base Station (or remotely via the CM900 Web Page). The ClassLight will flash green.
- 3. Activate Mic**
 - Remove mic from charger, and wait until it wakes up (8 seconds then double-beep)
 - Press the Mute button for 4 seconds until you hear a triple-beep, then let go. Both LEDs will flash green.
- 4. Ready!** - Registration takes a few seconds. When complete, the ClassLight will stop flashing and the mic will beep again. The mic is now ready for use.
5. Repeat steps 2-4 for additional mics, or when moving a mic to another room.



Scan for complete User
and Install Guide



www.gofrontrow.com/elevate-help

See the **User Guide** for more information. www.gofrontrow.com/elevate-help